

FOR MANI®

BY BESCHLIEG U.S.W. AG

Obsessed
with details

FORMANI®

**The details
are not
the details.
They make
the design.**

Charles Eames



'Obsessed with details' is characteristic of everything we do at FORMANI. After all, the difference lies in the details. That is why we constantly challenge ourselves to push the boundaries: from product to process, from strategy to service. In short, at FORMANI: 'good is the enemy of great!'

Our designs must also meet high standards. National and international top designers, who take architectural hardware to a higher level, choose to work with us with good reason. We do not limit our collaborations to one design movement or style. We have shared and decisive core values. These include a passion for design, an eye for detail, and high standards of quality and craftsmanship.

FORMANI's wide range of collections clearly demonstrate our willingness to go the extra mile. We never design just one beautiful door handle out of context. Instead, we always offer our customers a complete concept. This allows the chosen signature look or finish to be used as a common thread throughout the interior, and links door, window, and furniture fittings on a conceptual level.

This brochure will give you an impression of our 17 collections and designs. For more information on the complete concepts of every collection, feel free to contact Beschläge U.S.W. AG - www.usw.ch. Our partner is there to help you with a smile, a healthy dose of self-knowledge, and a dash of humour.

Pim Aarts
Owner and Managing Director

Our 17 collections

ONE	by Piet Boon	7
TWO	by Piet Boon	18
INC	by Piet Boon	22
ARC	by Piet Boon	28
ECLIPSE	by David Rockwell	33
TENSE	by Bertram Beerbaum	43
CONE	by Osiris Hertman	51
BOBBY	by Eric Kuster	59
NOUR	by Edward van Vliet	65

BOSCO	by Lázaro Rosa-Violán	71
SQUARE	by Jan des Bouvrie	77
RIBBON	by Bob Manders	83
FOLD	by Tord Boontje	89
EDGY	by Mathieu Bruls	95
FERROVIA	by FORMANI	101
TIMELESS	by FORMANI	106
BASICS	by FORMANI	110
Available finishes		116



Piet Boon

“At Studio Piet Boon we believe that there is great beauty in simplicity. The simplest details leave a lasting impression. Therefore never underestimate the importance of door fittings.”

Oostzaan, the Netherlands

Design philosophy: “Balancing functionality, aesthetics and individuality.”

Designed for FORMANI: ONE, TWO, INC, ARC

Design awards: German Design Award 2020 (ARC), Red Dot Design Award 2019 (INC)

Photography: Reinier van der Aart

ONE by Piet Boon

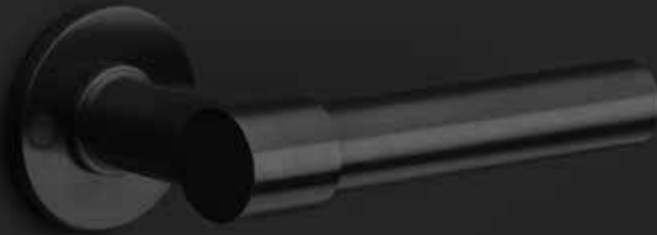




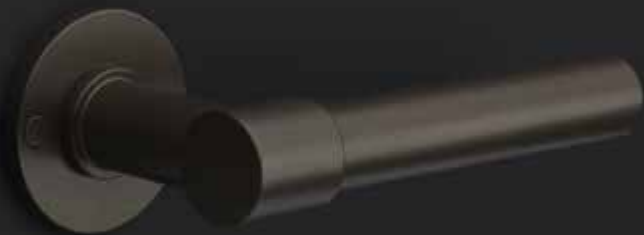
ONE u.s.w. 52.006.36.x
satin black



ONE u.s.w. 52.006.62.x
PVD satin black



ONE u.s.w. 52.006.35.x
bronze



ONE u.s.w. 52.006.92.x
PVD satin gold





ONE u.s.w. 52.006.30.x
white



ONE u.s.w. 52.006.60.x
satin stainless steel







Restaurant Noma 2.0

ONE reference: Copenhagen, Denmark
“We open the doors of the world’s best restaurant”

Interior design: Studio David Thulstrup
Architecture: BIG-Bjarke Ingels Group
Photography: Rasmus Hjortshøj
Product: ONE u.s.w. 52.006.36.2 satin black





Restaurant The Jane

ONE reference: Antwerp, Belgium
“Fine dining meets rock ‘n roll black”

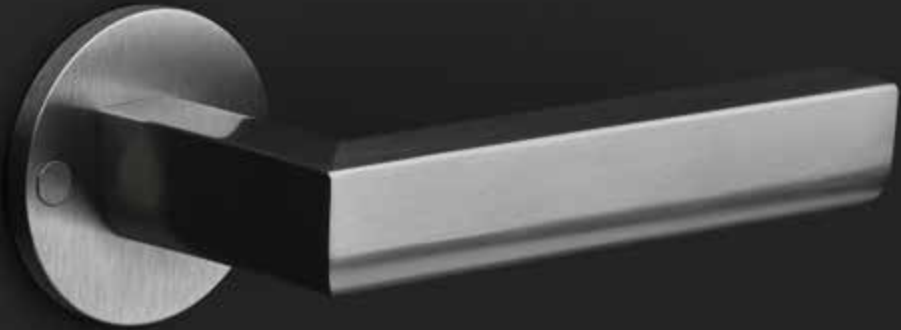
Interior design: Studio Piet Boon
Photography: Eric Kleinberg (left),
Tijmen Ballieux (right)
Product: ONE u.s.w. 52.009.36.5 satin black

TWO by Piet Boon



TWO u.s.w. 54.201.60.x
satin stainless steel (right)

TWO u.s.w. 54.201.70.x
satin stainless steel/oak wood (left)



TWO u.s.w. 54.201.68.x
satin stainless steel/oak wood black





INC by Piet Boon



reddot award 2019
winner

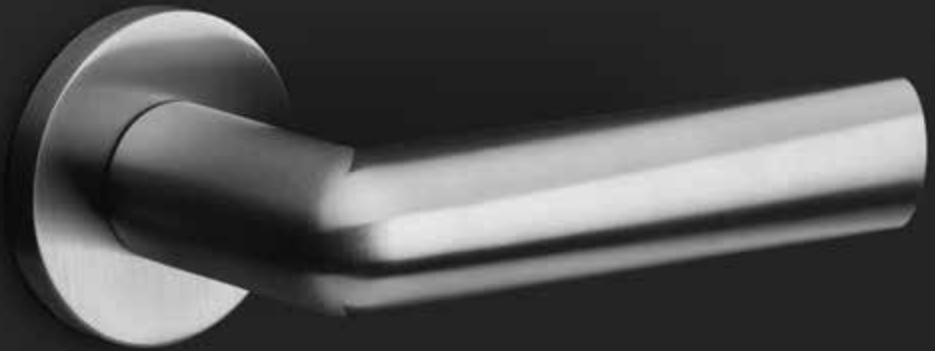


INC u.s.w. 52.711.62.x
PVD satin black





INC u.s.w. 52.711.60.x
satin stainless steel







Restaurant Brut172

INC reference: Reijmerstok, the Netherlands
“An eye-catching contrast to the raw materials of the interior”

Interior design: Niels Maier

Photography: Thomas De Bruyne (left),
Kyonne Leyser (right)

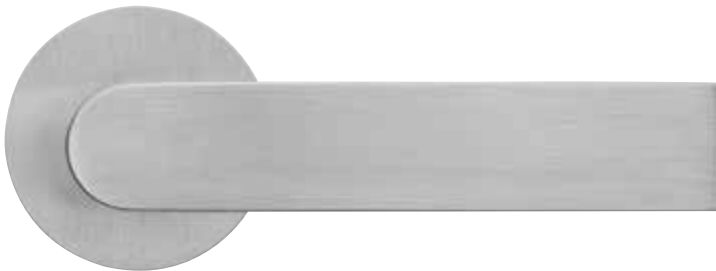
Product: INC u.s.w. 52.711.62.5 PVD satin black

ARC by Piet Boon



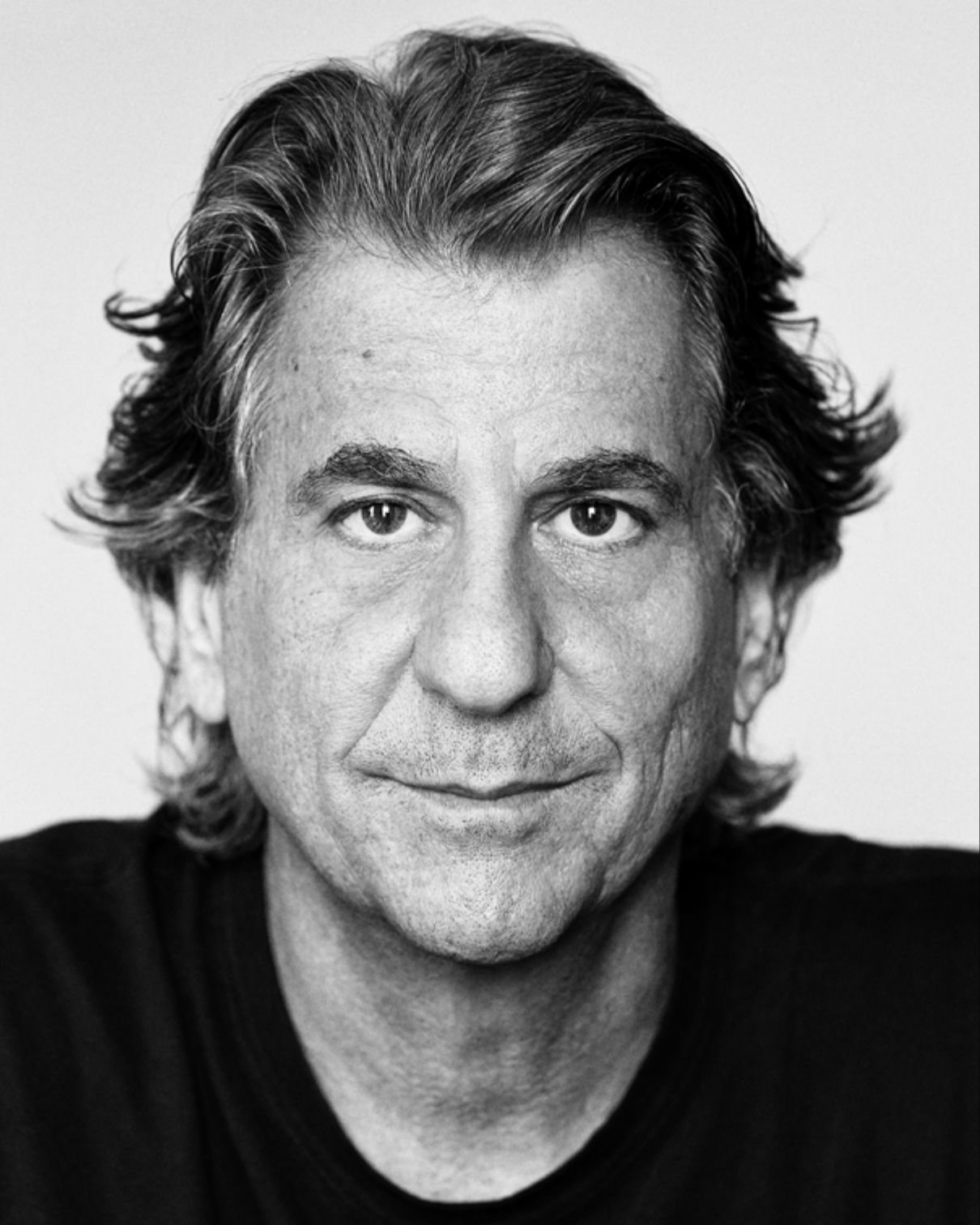
ARC u.s.w. 52.721.60.x
satin stainless steel (right)

ARC u.s.w. 52.721.62.x
PVD satin black (left)









David Rockwell

“We wanted to create something timeless — a modern classic — with an inflection point that responds to the human touch, like a prop on a stage. The door handle signifies transition and journey.”

New York, USA

Design philosophy: “It’s about observing a situation – a process, object or place – and believing it can be better.”

Designed for FORMANI: ECLIPSE

Design award: Red Dot Design Award 2021

Photography: Kamila Harris

ECLIPSE by David Rockwell



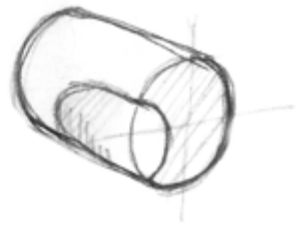
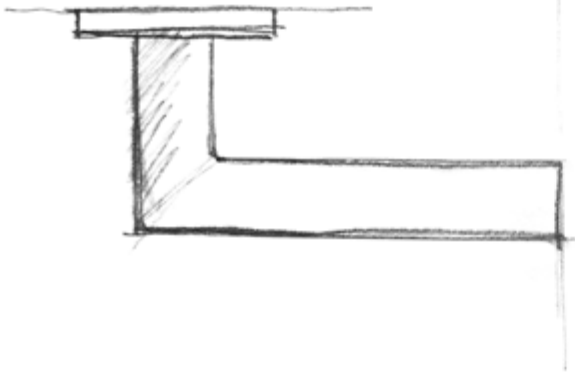
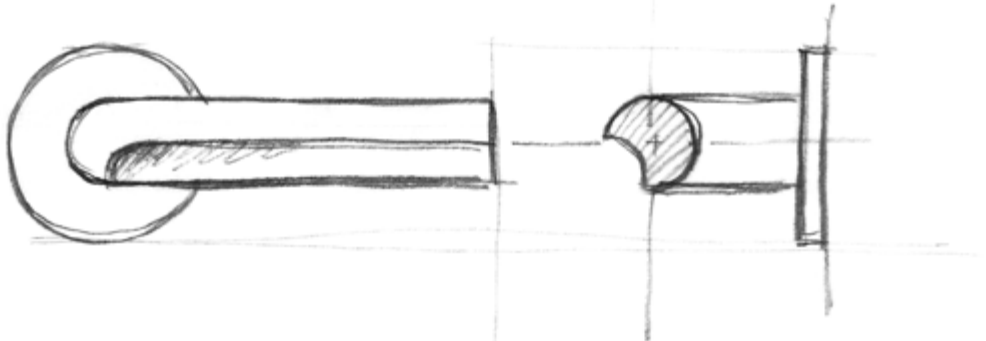
reddot award 2021
winner



ECLIPSE u.s.w. 52.880.62.x
PVD satin black







David Rockwell

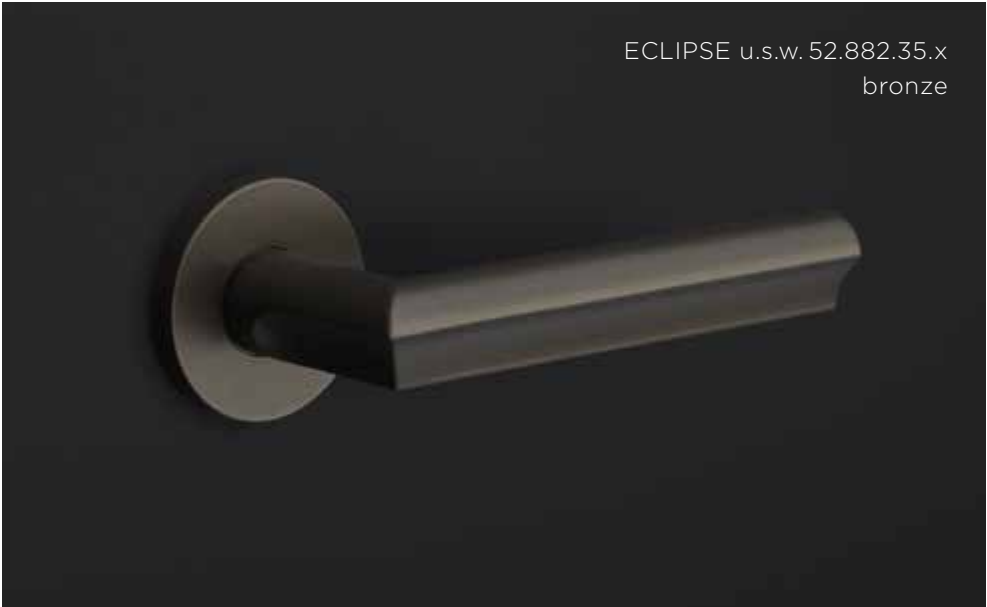
ECLIPSE u.s.w. 52.880.92.x
PVD satin gold



ECLIPSE u.s.w. 52.881.60.x
satin stainless steel



ECLIPSE u.s.w. 52.882.35.x
bronze



ECLIPSE u.s.w. 52.883.62.x
PVD satin black







Fairmont Hotel

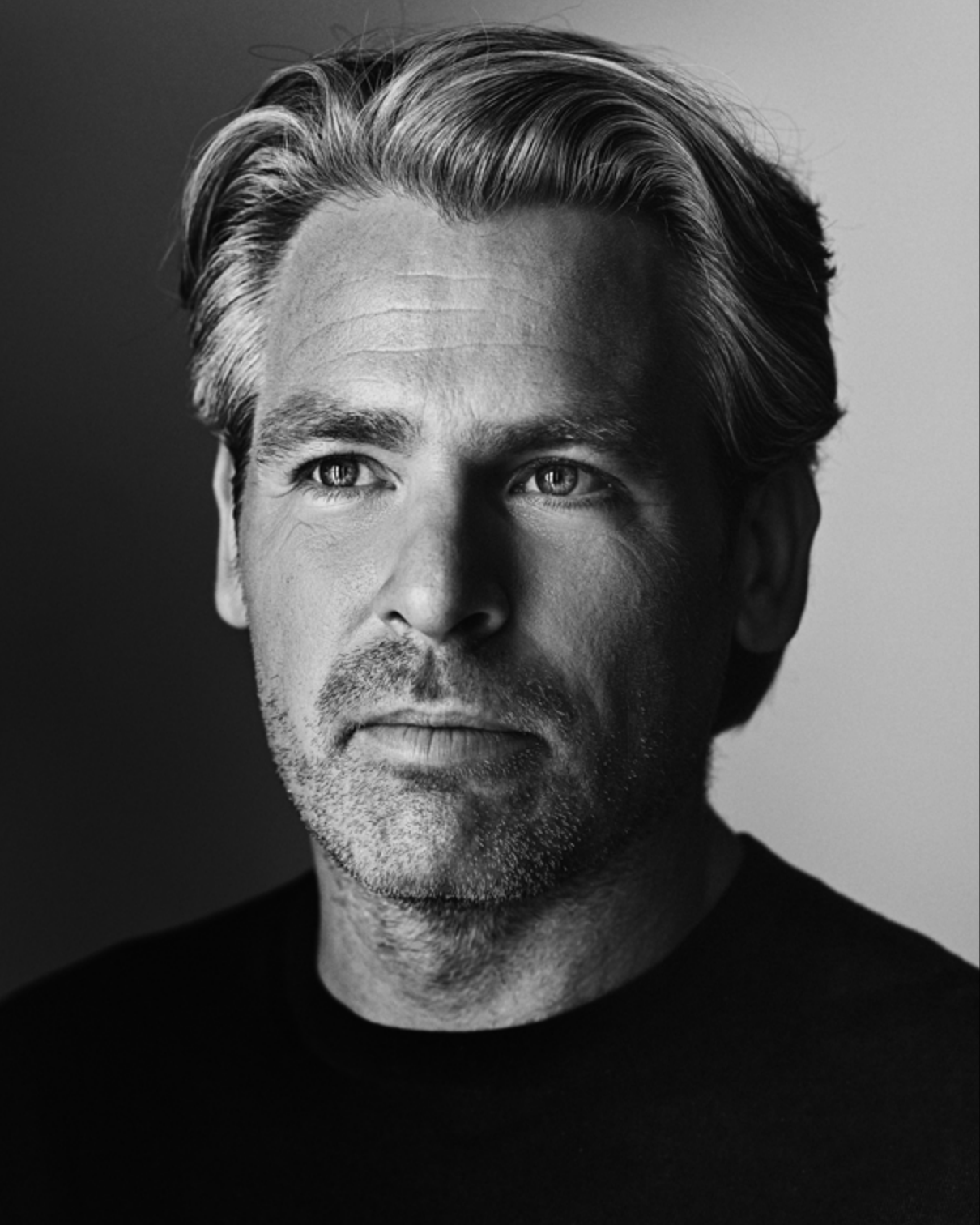
ECLIPSE reference: Moscow, Russia

“Born to be exceptional”

Interior design: David Rockwell, Rockwell Group

Photography: Olga Parshina

Product: ECLIPSE u.s.w. 52.880.62.x PVD satin black



Bertram Beerbaum

“Door handles may seem like an inconspicuous part in the home, but the devil is in the detail.”

Laren, the Netherlands

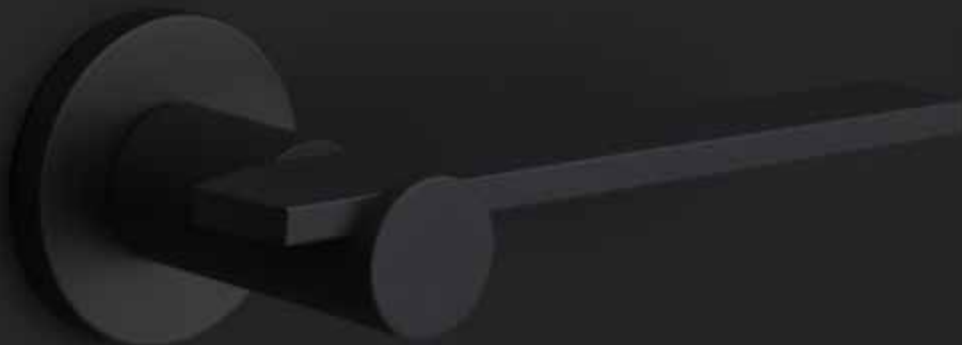
Design Philosophy: “I prefer to design a product that combines design and convenience in a natural way. Any product that I design must be something tough, chic and timeless with a tad own wisdom in them. Functional products with a surprising twist.”

Designed for FORMANI: TENSE

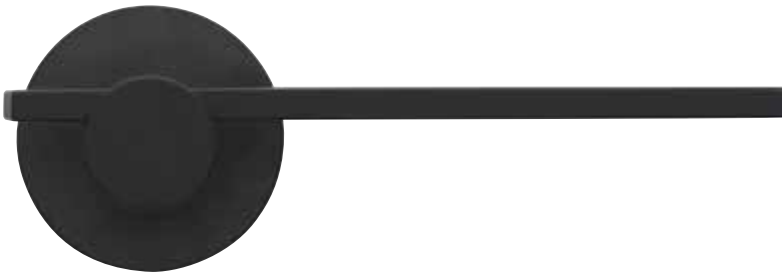
Design award: German Design Award 2016

Photography: Ewoud Rooks

TENSE by Bertram Beerbaum



TENSE u.s.w. 52.843.36.x
satin black



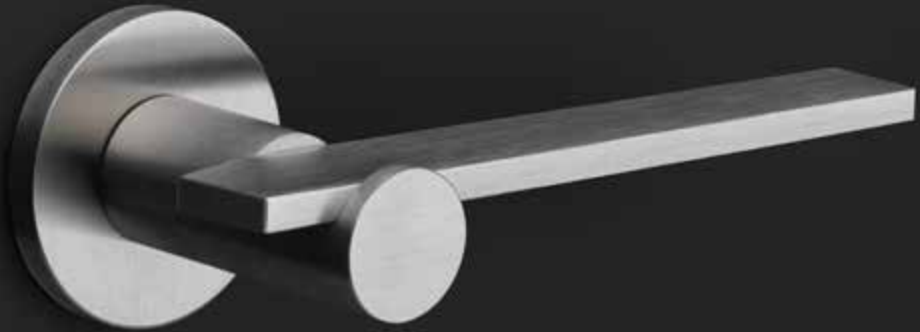
TENSE u.s.w. 52.843.35.x
bronze







TENSE u.s.w. 52.843.60.x
satin stainless steel





Osiris Hertman

“A door handle is the crowning jewel of your home – it’s always there, always visible. We’ve chosen a clear, sturdy design with a conical shape and removed the rosette by concealing the technology in the cone section.”

Santpoort-Zuid, the Netherlands

Design philosophy: “I like to incorporate landscapes into my interiors, guided by the essential influence of nature. I believe nature can teach us everything we need to know about design: the warmth of clothing, the softness concealed within hard materials, even flexibility and cohesion. Because that’s what really counts when it comes to interiors: that every last detail is in harmony with the rest.”

Designed for FORMANI: CONE

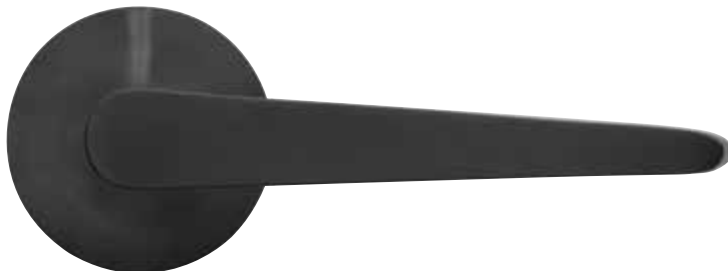
Design award: Red Dot Design Award 2021

Photography: Carli Hermès

CONE by Osiris Hertman

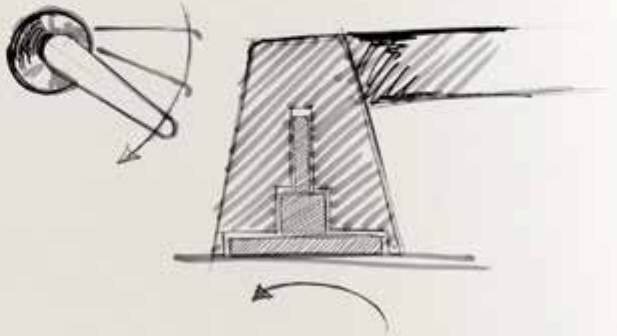
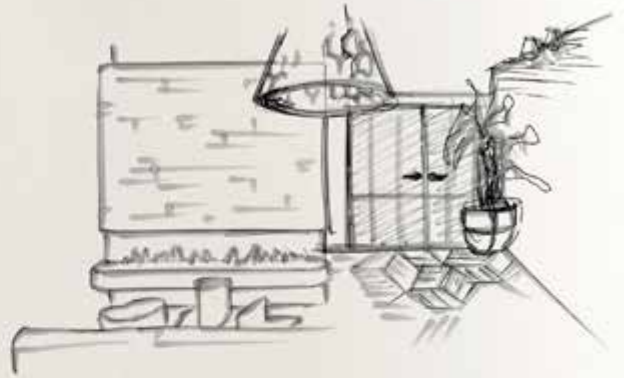


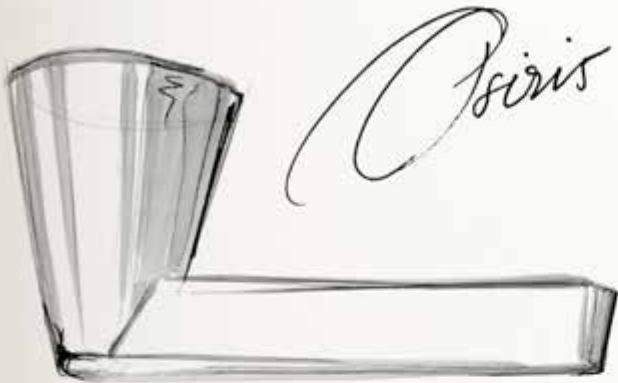
reddot award 2021
winner



CONE u.s.w. 52.590.62.x
PVD satin black











CONE u.s.w. 52.590.60.x
satin stainless steel



Eric Kuster

“Real materials, such as the solid steel of a handcrafted door handle, embody the attention to detail that truly makes a difference.”

Huizen, the Netherlands

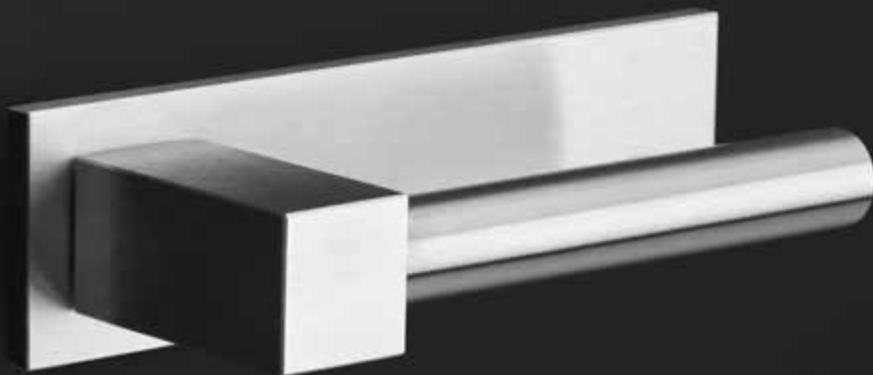
Design philosophy: “Above all else, the chance to exceed expectations in everything I do.”

Designed for FORMANI: BOBBY

Photography: Andreas Terlaak

BOBBY

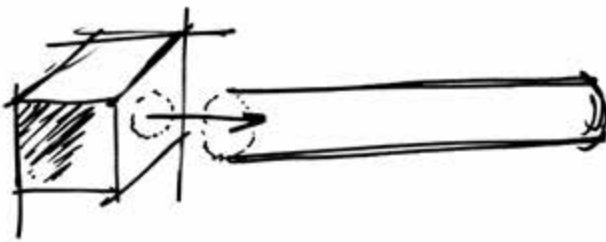
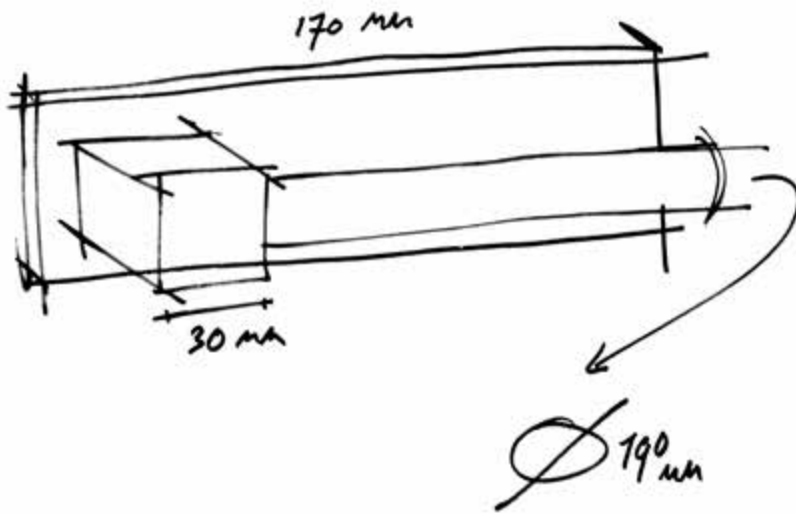
by Eric Kuster



BOBBY u.s.w. 52.847.35.x
bronze (right)

BOBBY u.s.w. 52.847.60.x
satin stainless steel (left)





Eric Kester

A handwritten signature, "Eric Kester", written in cursive. Below the signature is a long, thin, slightly curved line.

BOBBY u.s.w. 52.847.62.x
PVD satin black





Edward van Vliet

“Layers creating depth and dimension are key at Studio Edward van Vliet. Our door fittings are the hidden gems of these architectural layers. Treasures that enrich and personalize each space.”

Barcelona, Spain / Amsterdam, the Netherlands

Design philosophy: “Fascinated by a never depleting source of cultural and natural varieties I aim to compose new worlds by making unique combinations of colours, materials, patterns and shapes.”

Designed for FORMANI: NOUR

Design award: German Design Award 2015

Photography: Frank Tielemans

NOUR

by Edward van Vliet



NOUR u.s.w. 52.036.92.x
PVD satin gold



NOUR u.s.w. 52.036.36.x
satin black



NOUR u.s.w. 52.036.64.x
polished stainless steel







Lázaro Rosa-Violán

“A door handle is what separates you and a room. Door handles open worlds. A handle is a medium, a first impression. It allows you to enter and leave.”

Barcelona, Spain

Design philosophy: “My philosophy has always been based on accessible design. The experience should be greater than the space and for everyone to participate in.”

Designed for FORMANI: BOSCO

Design awards: German Design Award 2017,
Iconic Award 2017

Photography: Daniel Alea

BOSCO

by Lázaro Rosa-Violán



BOSCO u.s.w. 52.821.60.x
satin stainless steel/satin black



BOSCO u.s.w. 52.824.64.x
polished stainless steel/carrara marble



BOSCO u.s.w. 52.821.00.x
brass unlacquered/satin black







Jan des Bouvrie

“Open the door in style. We joined forces with FORMANI to create a doorware series that focuses on the essentials, creating a simple, sleek, and timeless design.”

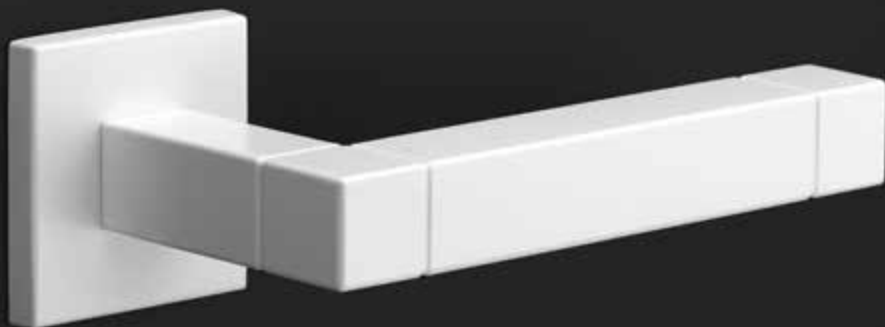
Naarden, the Netherlands († October 4, 2020)

Design philosophy: “Symmetry, minimalism and functionality.”

Designed for FORMANI: SQUARE

Photography: Erwin Olaf

SQUARE by Jan des Bouvrie



SQUARE u.s.w. 52.794.36.x
satin black (right)

SQUARE u.s.w. 52.794.30.x
white (left)



SQUARE u.s.w. 52.794.60.x
satin stainless steel



SQUARE u.s.w. 52.794.64.x
polished stainless steel







Bob Manders

“Create unpredictable yet harmonious spaces that are at home anywhere in the world.”

Oisterwijk, the Netherlands

Design philosophy: “Combine a sensitive understanding of the past with a passion for innovation.”

Designed for FORMANI: RIBBON

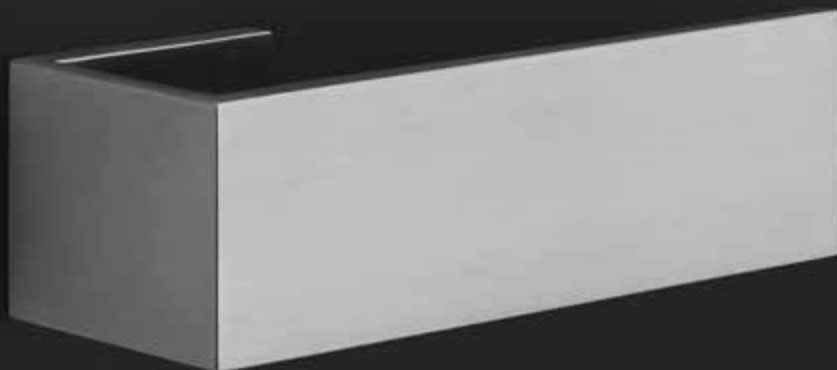
Design award: Iconic Awards 2015

Photography: Marjo van de Peppel-Kool

RIBBON by Bob Manders

ICD	2
NIC	0
AWA	1
RDS	5

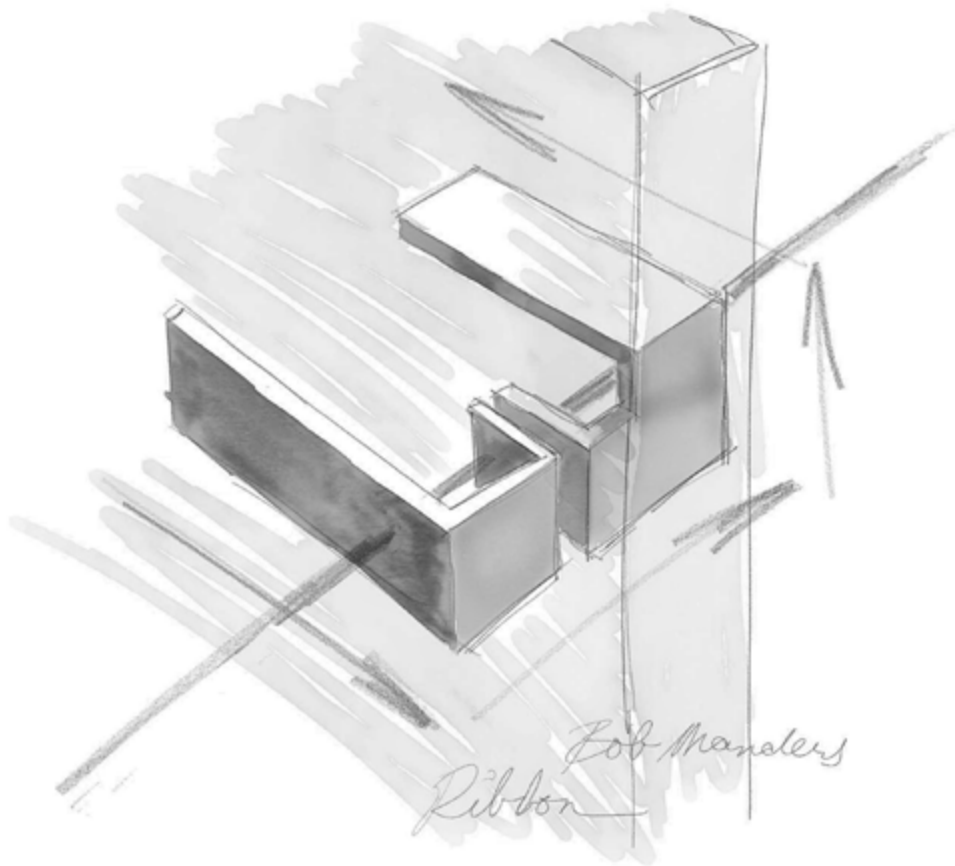
product
winner



RIBBON u.s.w. 52.032.36.x
satin black (right)

RIBBON u.s.w. 52.032.60.x
satin stainless steel (left)









Tord Boontje

“I’m interested in creating elements for everyday life that are exciting and uplifting to live with. Explore and use accessories to re-invent your space.”

London, United Kingdom

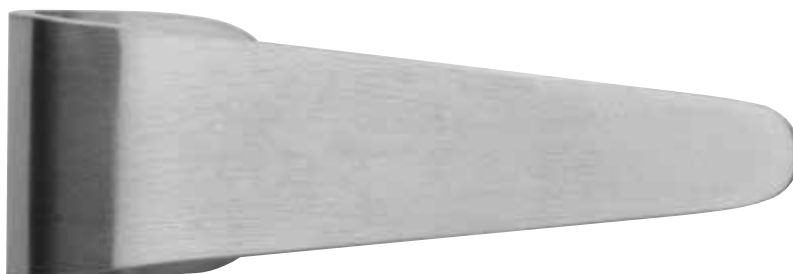
Design philosophy: “A design is not just a design, it should tell a story.”

Designed for FORMANI: FOLD

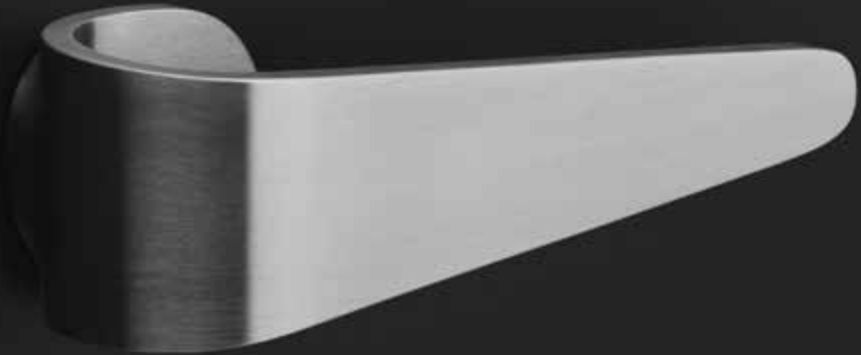
Design award: Red Dot Design Award

Photography: Angela Moore

FOLD by Tord Boontje



FOLD u.s.w. 52.033.60.x
satin stainless steel









Mathieu Bruls

“In appearance EDGY shows what it does;
while handling, she feels like another body.”

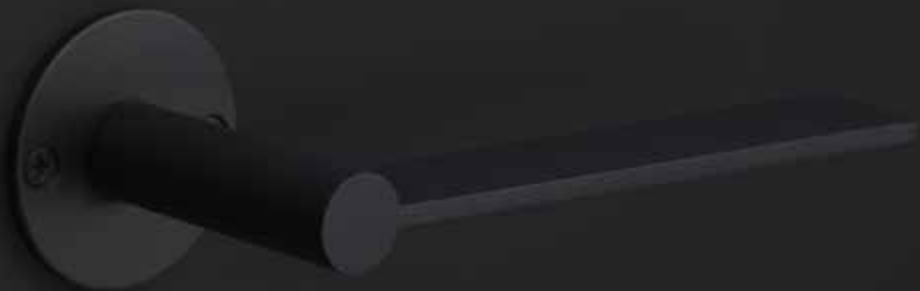
Maastricht, the Netherlands

Design philosophy: “Go with the flow,
knowing when to go against it.”

Designed for FORMANI: EDGY

Photography: Hugo Thomassen

EDGY by Mathieu Bruls



EDGY u.s.w. 52.841.36.x
satin black



EDGY u.s.w. 52.841.60.x
satin stainless steel







BY FORMANI

“The importance of authenticity was the leading idea in these following three collections, which are based on traditional models that have stood the test of time.”

Maastricht, the Netherlands

Pim Aarts, Owner and Managing Director

Design philosophy: “We must do more than create products that are functional and understandable. We need to develop products that also bring excitement, pleasure and fun, and - perhaps most importantly - beauty to people’s lives. FORMANI simply wants to make life a bit more beautiful.”

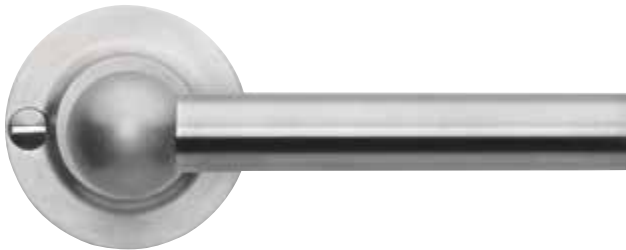
Developed by FORMANI: FERROVIA, TIMELESS, BASICS

Photography: Tijmen Ballieux

FERROVIA by FORMANI



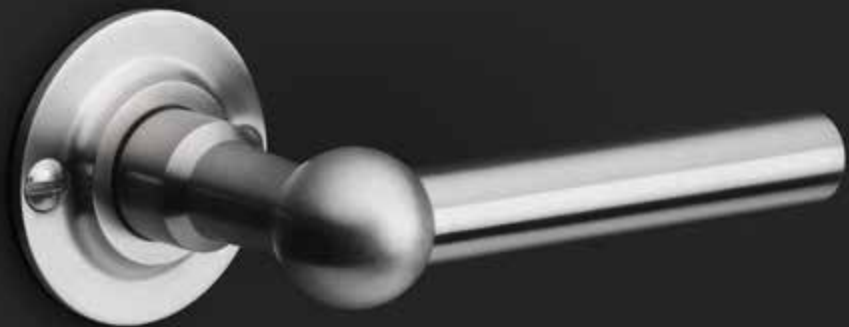
FERROVIA u.s.w. 52.819.60.x
satin stainless steel



FERROVIA u.s.w. 52.819.64.x
polished stainless steel



FERROVIA u.s.w. 52.819.60.x
satin stainless steel



FERROVIA / 105

TIMELESS by FORMANI



TIMELESS u.s.w. 55.530.23.x
satin nickel/ebony wood (right)

TIMELESS u.s.w. 55.530.00.x
brass unlacquered/ebony wood (left)







Project August

TIMELESS reference: Antwerp, Belgium
“Deep respect for its heritage”

Interior design: Vincent Van Duysen

Photography: Tijmen Ballieux

Product: TIMELESS u.s.w. 55.250.36.0 satin black

BASICS by FORMANI



BASICS u.s.w. 52.866.92.x
PVD satin gold



BASICS u.s.w. 52.866.30.x
white



BASICS u.s.w. 52.866.36.x
satin black



BASICS u.s.w. 52.866.60.x
satin stainless steel



BASICS u.s.w. 52.866.64.x
polished stainless steel



BASICS u.s.w. 52.866.98.x
PVD polished copper



BASICS u.s.w. 52.866.97.x
PVD satin bronze



BASICS u.s.w. 52.866.92.x
PVD satin gold



BASICS u.s.w. 52.866.62.x
PVD gunmetal

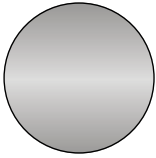


Finishes

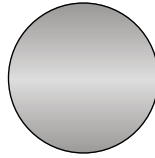
Our products are available in a variety of finishes. Our extensive finish chart ensures that our hardware collections fit into any interior or exterior design in terms of style and quality. Please note that the available finishes and colour sets may vary according to the product, collection, and model.



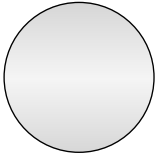
More information:
see our website



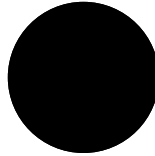
1
Satin stainless steel
Available in: ONE, TWO,
INC, ARC, ECLIPSE, TENSE,
CONE, BOBBY, BOSCO,
SQUARE, RIBBON, FOLD,
EDGY, FERROVIA, BASICS



2
PVD satin stainless steel
Available in: SQUARE,
BASICS



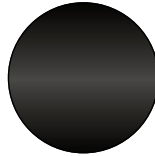
3
Polished stainless steel
Available in: NOUR,
BOSCO, SQUARE,
FERROVIA, BASICS



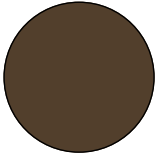
4
Satin black
Available in: ONE, TENSE,
NOUR, SQUARE, RIBBON,
EDGY, TIMELESS, BASICS



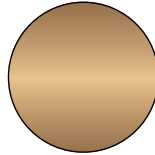
5
PVD satin black
Available in: ONE, INC, ARC,
ECLIPSE, CONE, BOBBY



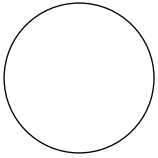
6
PVD gunmetal
Available in: BASICS



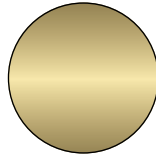
7
Bronze
Available in: ONE, ECLIPSE,
TENSE, BOBBY, BASICS



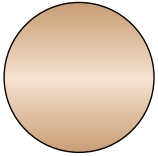
8
PVD satin bronze
Available in: BASICS



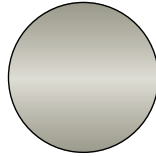
9
White
Available in: ONE,
SQUARE, BASICS



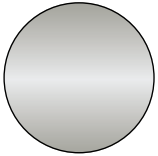
10
PVD satin gold
Available in: ONE,
ECLIPSE, NOUR, BASICS



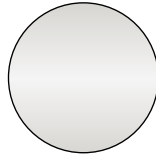
11
PVD polished copper
Available in: BASICS



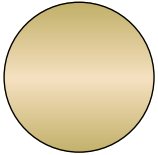
12
Satin nickel
Available in: TIMELESS



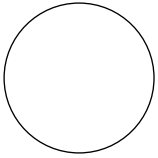
13
PVD satin nickel
Available in: TIMELESS



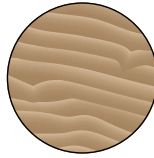
14
Bright nickel
Available in: TIMELESS



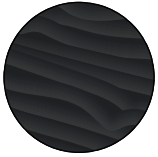
15
Brass unlacquered
Available in: BOSCO,
TIMELESS



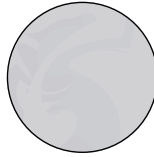
20
Corian
Available in:
ONE BATHWARE



21
Oak wood
Available in: TWO



22
Oak wood black
Available in: TWO



23
Carrara marble
Available in: BOSCO



24
Ebony wood
Available in: TIMELESS

Contact

Beschläge U.S.W. AG
Bönirainstrasse 16
8800 Thalwil
Switzerland

+41 (0)44 722 90 00
info@usw.ch
www.usw.ch



More information:
see our website

Editorial coordination

Formani Holland BV, Maastricht-Airport (NL)
Zuiderlicht, Maastricht (NL)

Design and art direction

Zuiderlicht, Maastricht (NL)

Main photography:

Hugo Thomassen, Maastricht (NL)

Printing

Gebo Druck AG, Birmensdorf (CH)

**Copyright © 2021 Formani Holland BV
Maastricht, the Netherlands**

All rights reserved. Reproduction of the content
in other publications is not permitted without
the prior consent of FORMANI Holland BV.

**The details
are not
the details.
They make
the design.**